

SafeNet Authentication Client 8.3 使用手冊

| | |
|--|---|
| <p>作業系統需求：</p> <ul style="list-style-type: none">Windows XP SP3 (32-bit, 64-bit)Windows Server 2003 SP3 (32-bit, 64-bit)Windows Server 2003 R2 (32-bit, 64-bit)Windows Vista SP2 (32-bit, 64-bit)Windows Server 2008 SP2 (32-bit)Windows Server 2008 R2 SP1 (64-bit)Windows 7 (32-bit, 64-bit)Windows 8 (32-bit, 64-bit)Windows 8.1 (32-bit, 64-bit) | <p><u>目錄</u></p> <ul style="list-style-type: none">1. 軟件安裝<ul style="list-style-type: none">1.1. 光碟安裝 或1.2. 網上安裝2. 滙入授權3. 更改 iKey 密碼4. 檢視數位證書內容 |
|--|---|

電子核證服務有限公司客戶服務熱線：(852) 2917 8833

1. 軟件安裝

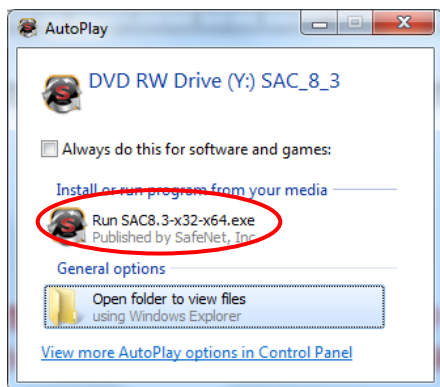
注意: 請以 **Windows** 管理員身份登錄，以便正常安裝軟件。

閣下可選擇從光碟(1.1) 或經本公司網頁下載(1.2)檔案安裝軟件。

請卸載舊軟件版本(如適用)。

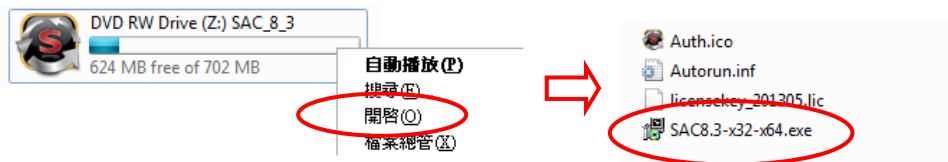
1.1 光碟安裝

1. 關閉所有應用程式。
2. 將光碟放入光碟機，選擇 **Run SAC8.3-x32-x64.exe** 執行安裝程式，安裝需數分鐘，請耐心等待。

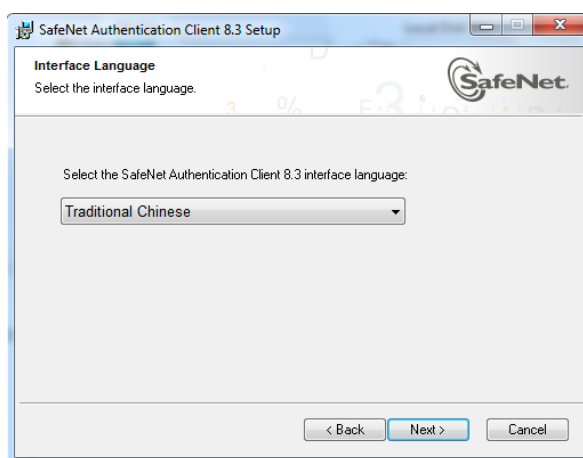
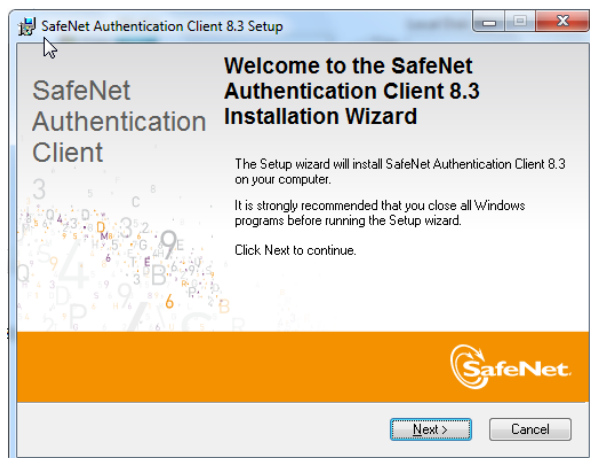


** 如電腦的自動安裝功能未能啟動，請按照以下指示:

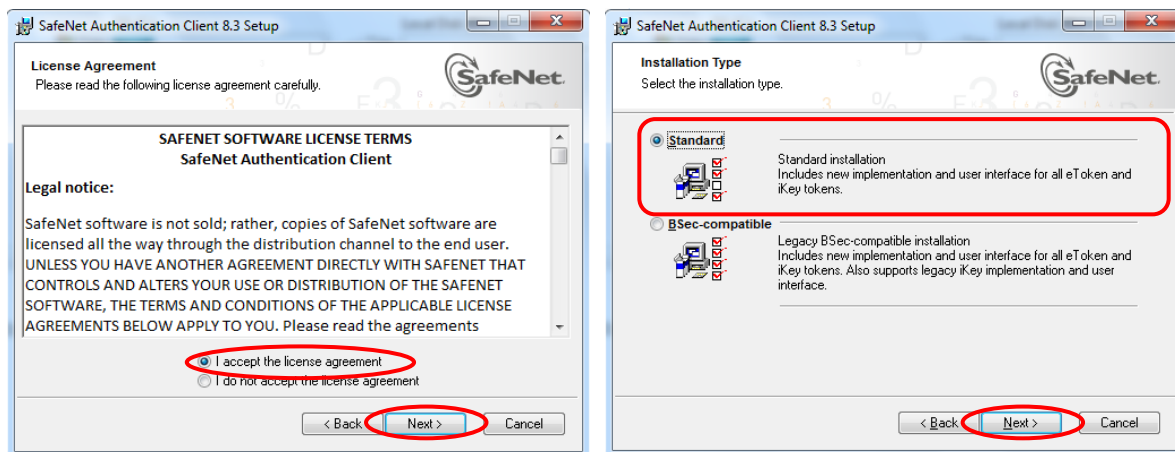
開啟 [我的電腦] > [SAC_8_3] > 右鍵單擊 [開啟] 選擇[SAC.8.3-x32-x64.exe] 安裝



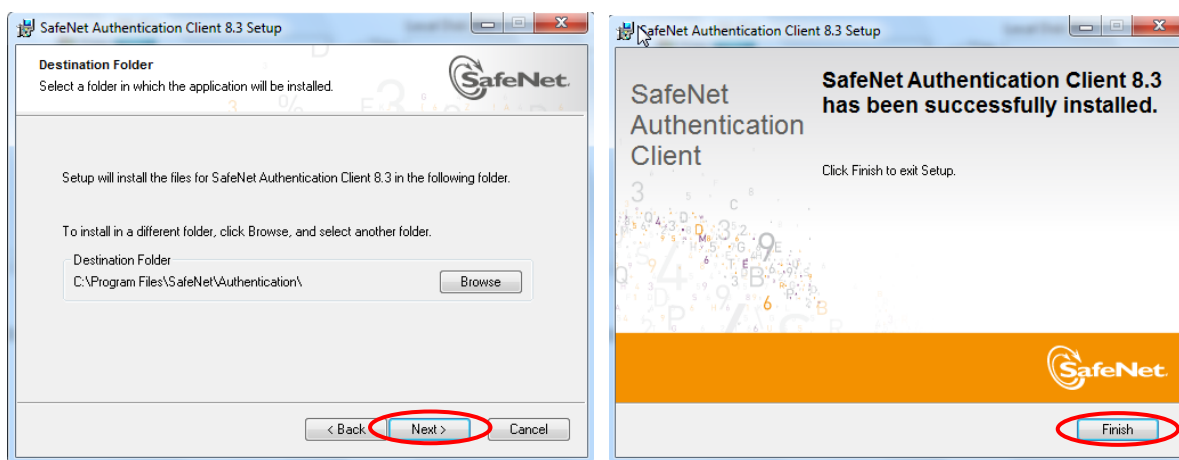
3. 單擊 **Next** (下一步)，選擇介面語言 **Traditional Chinese (繁體)**，然後選擇 **Next** (下一步)。



4. 選擇 “I accept the license agreement”(接受條款)，然後選擇 **Next (下一步)** 進行安裝。
選擇 “Standard installation”，然後單擊 **Next (下一步)** 進行安裝。

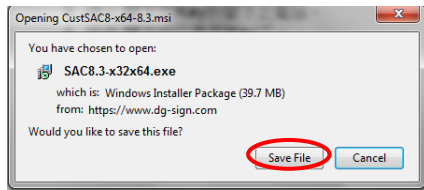


5. 確認安裝的路徑後，單擊 **Next (下一步)**，選擇 **Finish (完成)**，必須重新啟動電腦以完成安裝程序。

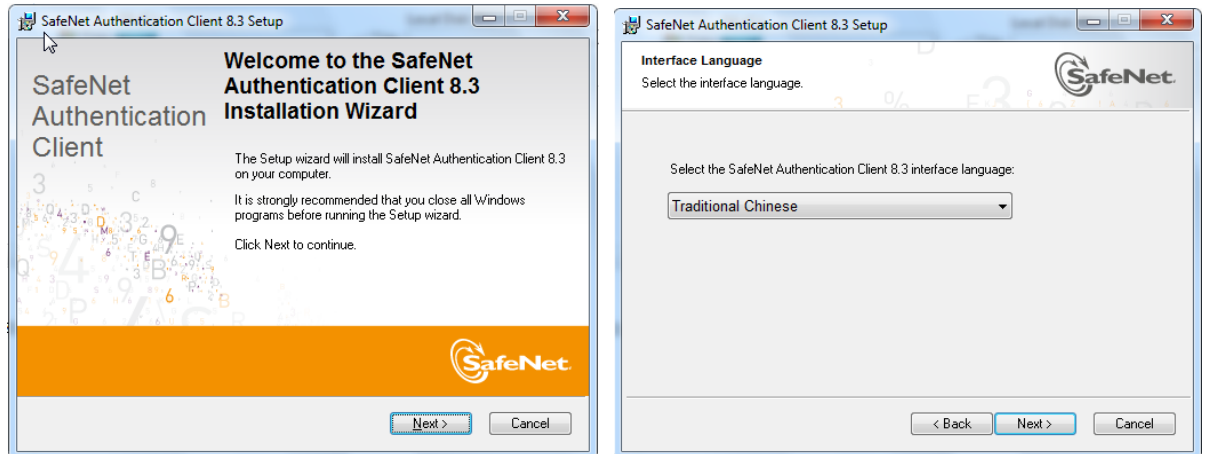


1.2 網上安裝

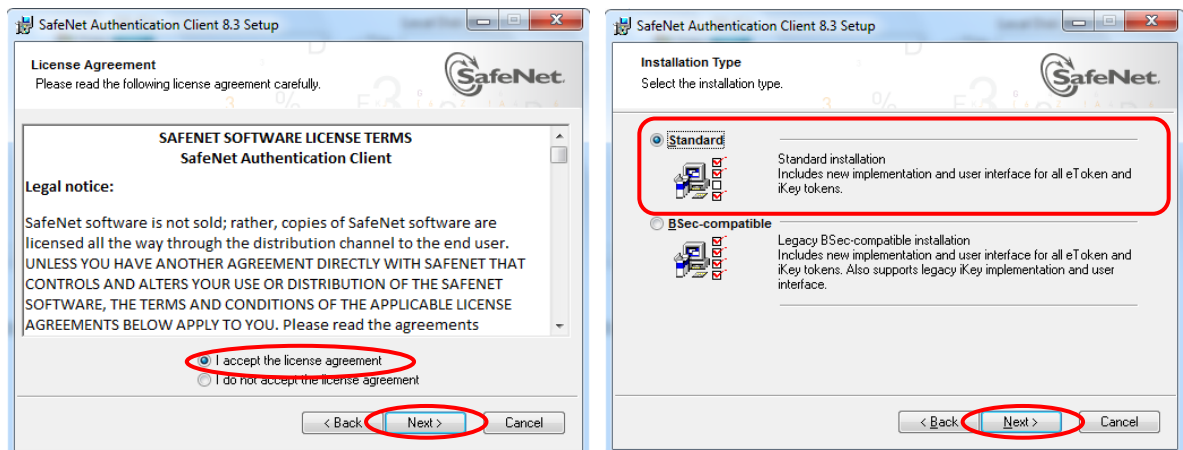
1. 單擊 **Save File** 選擇儲存位置，下載軟件後，雙擊 **SAC8.3-x32x64.exe** 執行安裝程式，安裝需數分鐘，請耐心等待。



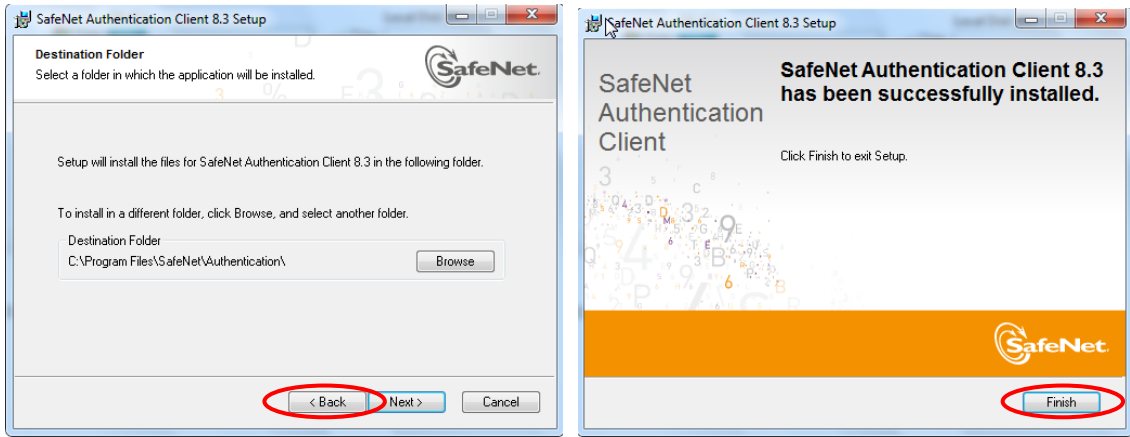
2. 單擊 **Next (下一步)**，選擇介面語言 **Traditional Chinese (繁體)**，然後選擇 **Next (下一步)**。



3. 選擇 **“I accept the license agreement” (接受條款)**，然後選擇 **Next (下一步)** 進行安裝。選擇 **“Standard installation”**，然後單擊 **Next (下一步)** 進行安裝。

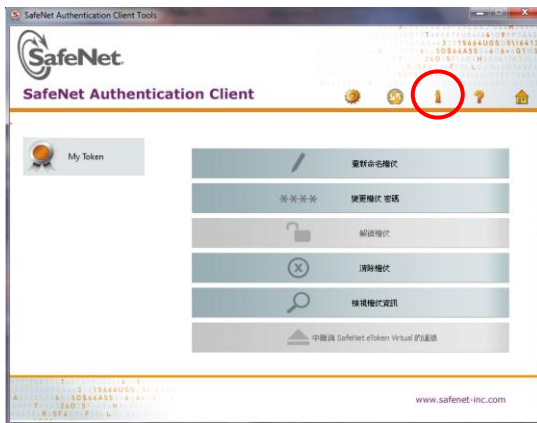


4. 確認安裝的路徑後，單擊 **Next (下一步)**，選擇 **Finish (完成)**，必須重新啟動電腦以完成安裝程序。

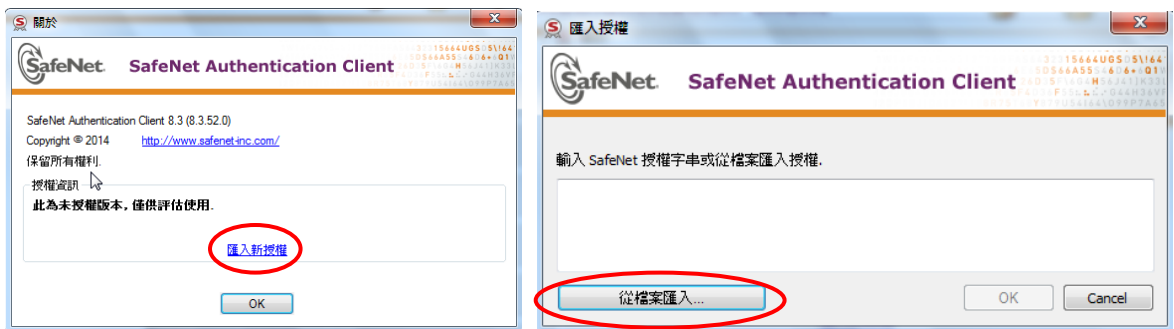


2. 匯入授權

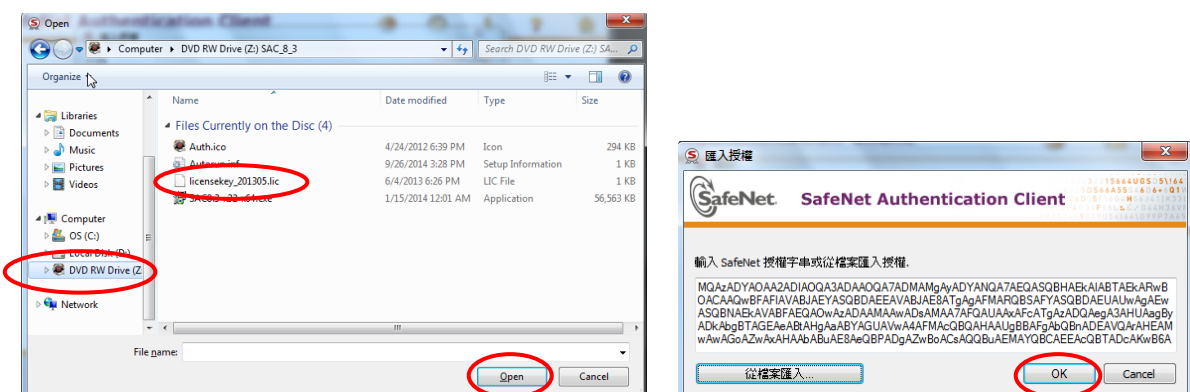
1. 選擇(開始)功能表，選擇 程式集 > **SafeNet** > **SafeNet Authentication Client** > **SafeNet Authentication Client Tools**，單擊 **關於** 按鈕。



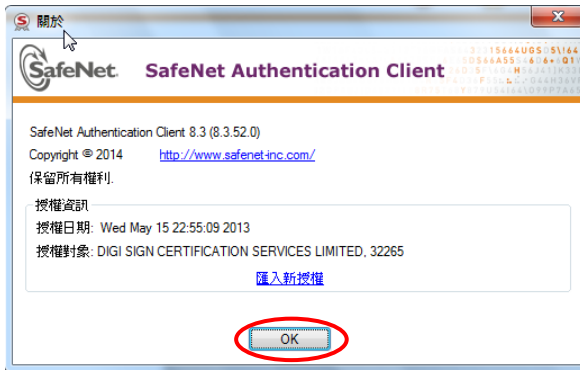
2. 單擊 **匯入授權**，選擇 **從檔案匯入**。



3. 選擇光碟位置，再選擇 **licensekey_xxxxx.lic** 及按開啟，按 **OK** 進行匯入。

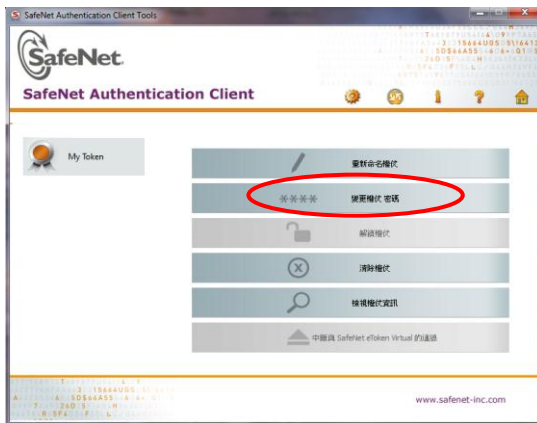


- 按**OK**完成匯入授權。

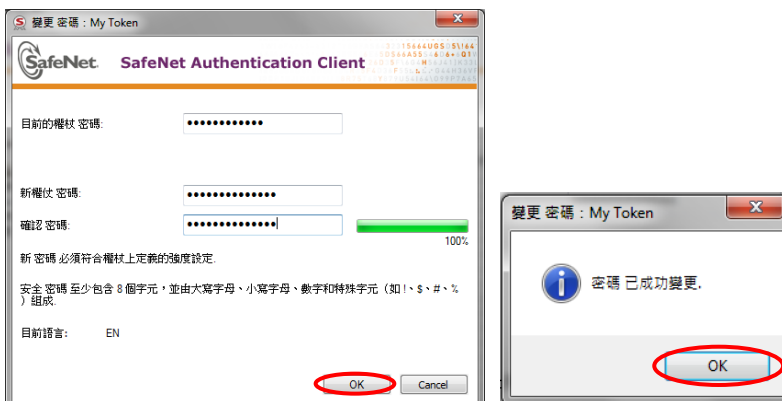


3. 更改 iKey 密碼 (選擇性)

- 把 iKey 插入電腦中。
- 選擇(開始)功能表，選擇 程式集 > **SafeNet** > **SafeNet Authentication Client** > **SafeNet Authentication Client Tools**，單擊 **變更權杖密碼** 按鈕。



- 顯示密碼更改視窗。



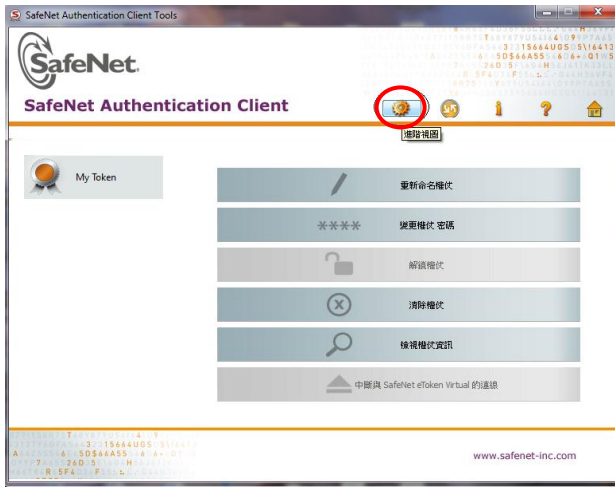
- 在目前的權杖密碼，輸入現有密碼。如初次使用，請輸入密碼封條內之密碼。
- 在新權杖密碼，輸入新密碼。
- 在確認密碼，再次輸入新密碼進行確認。
- 選擇 **OK** 進行密碼更新，再按 **OK** 完成變更。

注意:

- 如輸入錯誤密碼超過**10**次，**iKey**將被鎖定。
- 密碼至少包含 **8** 個字元，並由大寫字母、小寫字母、數字和特殊字元組成。

4. 檢視數位證書內容

1. 選擇(開始)功能表，選擇 程式集 > SafeNet > SafeNet Authentication Client > SafeNet Authentication Client Tools，單擊 進階視圖 按鈕 。



2. 選擇證書，檢視數位證書內容。



SafeNet Authentication Client 8.3 User Manual

| | |
|---|--|
| Operating System Requirement: Windows XP SP3 (32-bit, 64-bit) Windows Server 2003 SP3 (32-bit, 64-bit) Windows Server 2003 R2 (32-bit, 64-bit) Windows Vista SP2 (32-bit, 64-bit) Windows Server 2008 SP2 (32-bit) Windows Server 2008 R2 SP1 (64-bit) Windows 7 (32-bit, 64-bit) Windows 8 (32-bit, 64-bit) Windows 8.1 (32-bit, 64-bit) | <u>Content</u> 1. Installation of software 1.1. Installation from CD-Rom or, 1.2. Installation from website 2. Import License 3. Change iKey Password 4. View the Digital Certificate |
|---|--|

1. Digi-Sign Certification Services Limited Customer Service Hotline: (852) 2917 8833

1. Install the software

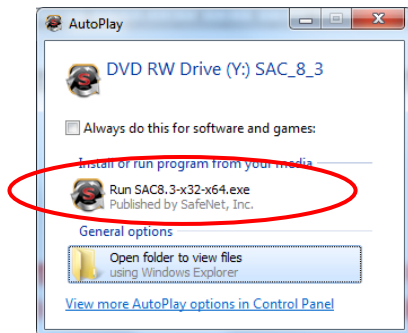
Note: You should logon with administrator privileges to Windows in order to install the software properly.

You may install the software by CD-Rom (1.1) or download the software from our website (1.2).

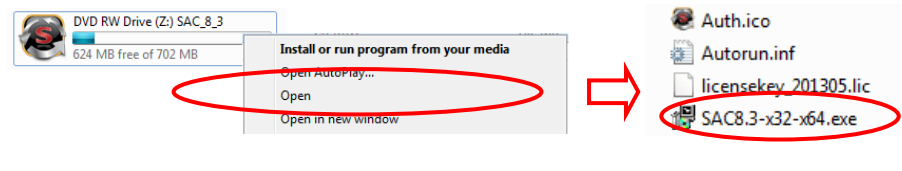
Please uninstall SAC previous version (if applicable).

1.1 Install from CD-Rom

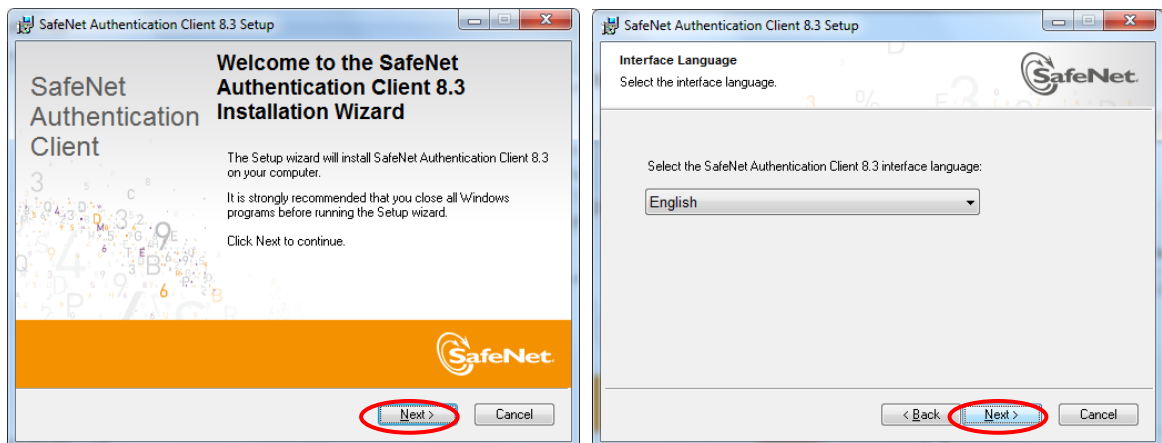
1. Close all programs and applications.
2. Insert the software CD-Rom to your personal computer's CD-Rom drive. Select **Run SAC8.3-x32x64.exe** to start the installation. *The installation process will be completed in a few minutes. Please be patient.*



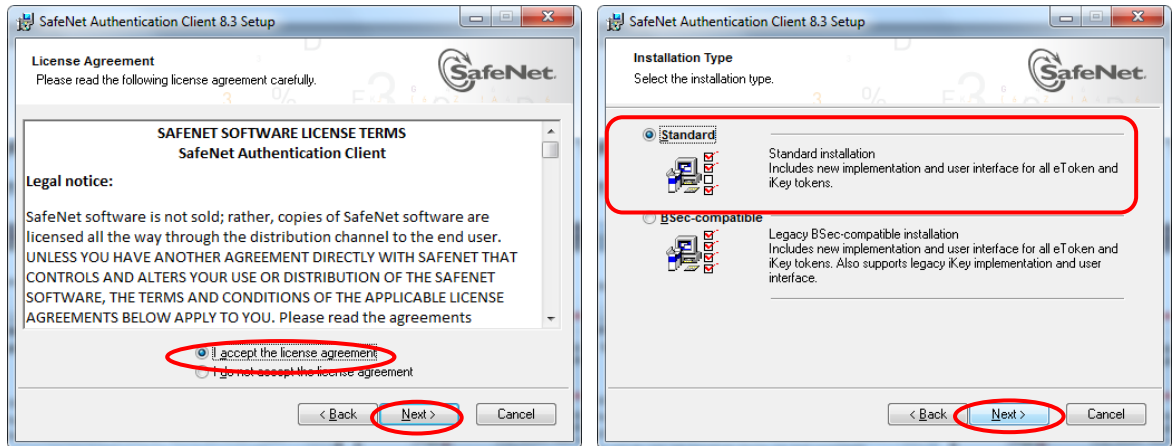
**** Some PCs may have the Autorun feature disabled. In that case, follow the steps below:**
Open [My Computer] > [SAC_8.3] > Right-click the drive click [Open]>select SAC8.3-x32-x64 to start the installation.



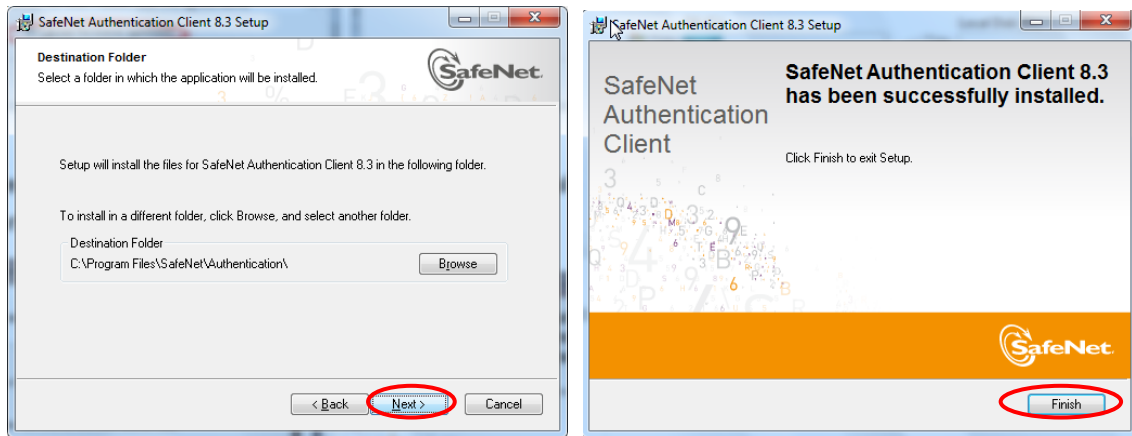
3. Click **Next** and select the interface language and click **Next**.



4. Select **“I accept the license agreement”** and click **Next**. Then select **“Standard installation”** and click **Next** to run the installation.

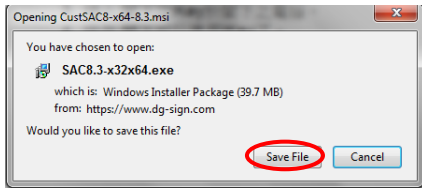


5. Having confirmed the Destination Folder, click **Next** to continue the installation and then click **Finish**. You **must** restart your personal computer to complete the installation.

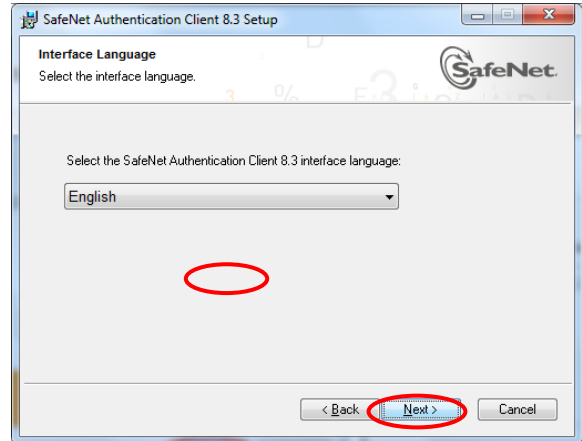
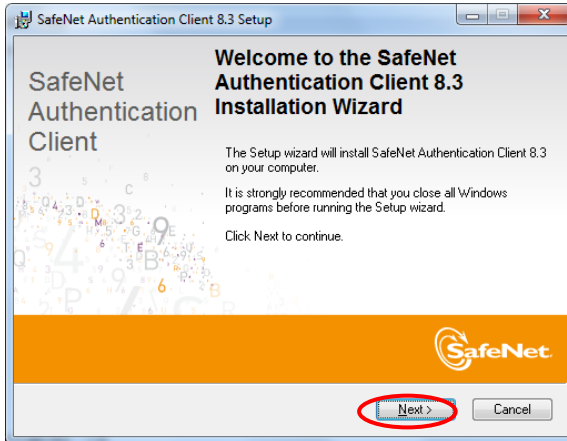


1.2 Installation from website

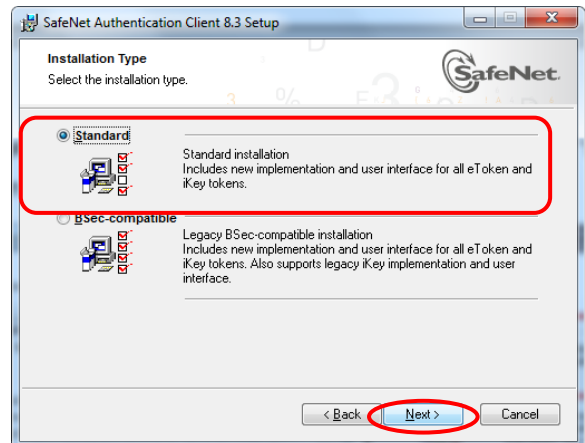
1. Click **Save File** and select destination folder to start download. Upon completion, double click **SAC8.3-x32x64.exe** to start installation. The installation process will be completed in a few minutes. Please be patient.



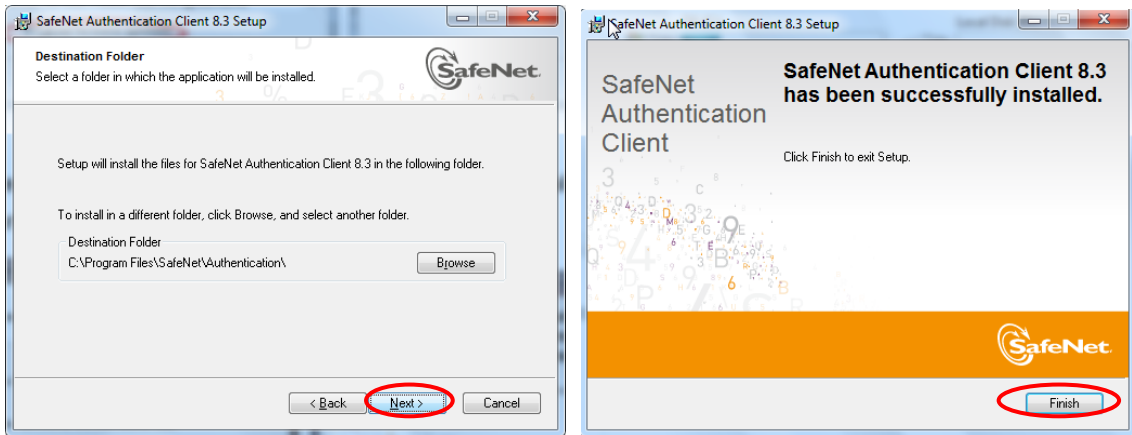
2. Click **Next** and select the interface language and click **Next**.



3. Select **"I accept the license agreement"** and click **Next**. Then select **"Standard installation"** and click **Next** to run the installation.

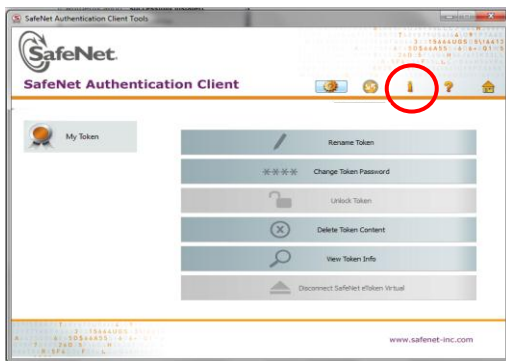


- Having confirmed the Destination Folder, click **Next** to continue the installation and then click **Finish**. You **must** restart your personal computer to complete the installation.

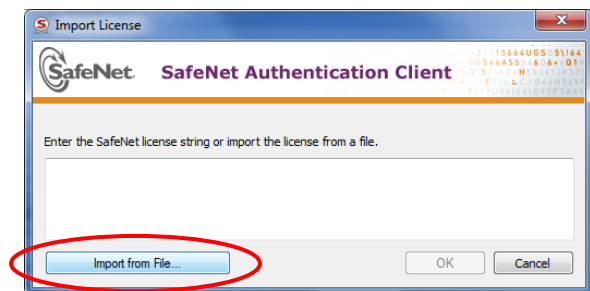
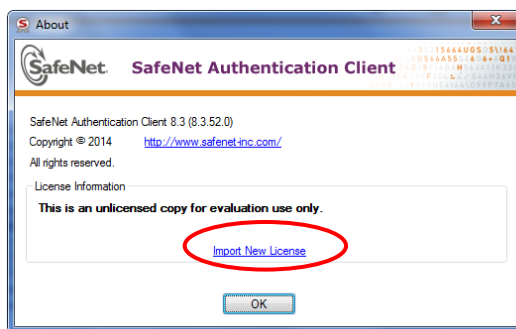


2. Import License

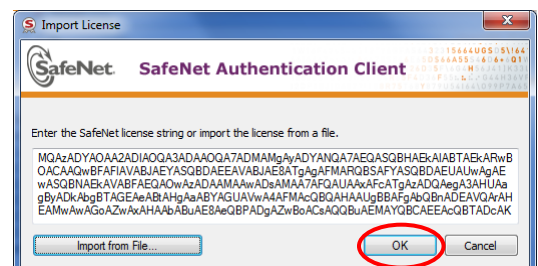
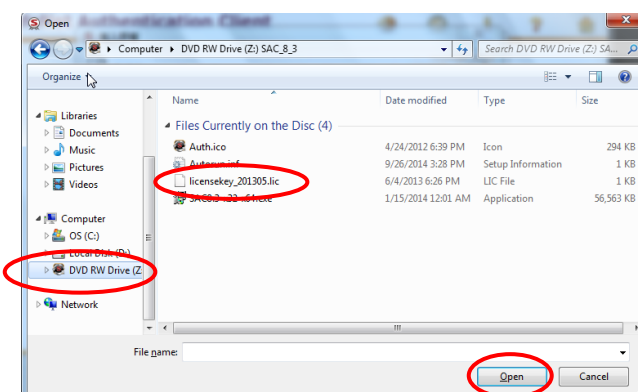
- From the **Start** menu, select **Programs > SafeNet > SafeNet Authentication Client > SafeNet Authentication Client Tools**. Click the **About** icon.



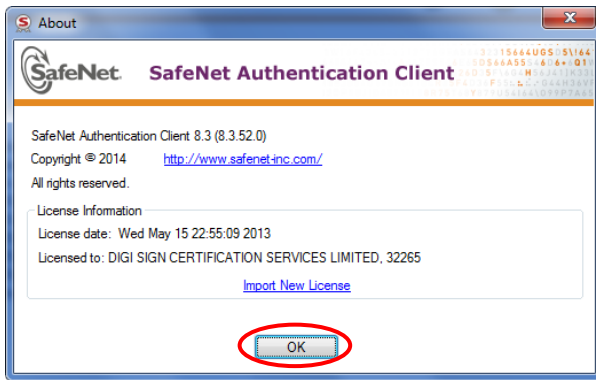
- Click **Import New License** and then click **Import from File**.



- Select the CDRom location and select **licensekey_xxxx.lic**, then click **Open**. Click **OK** to import the license.

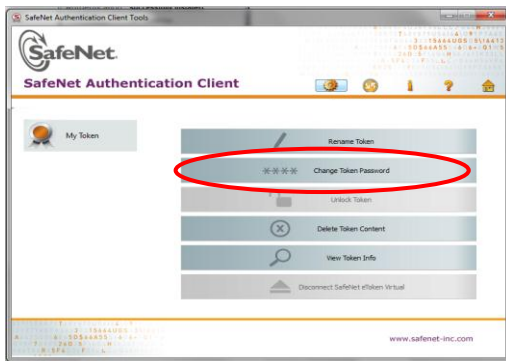


4. Click **OK** to finish the import.

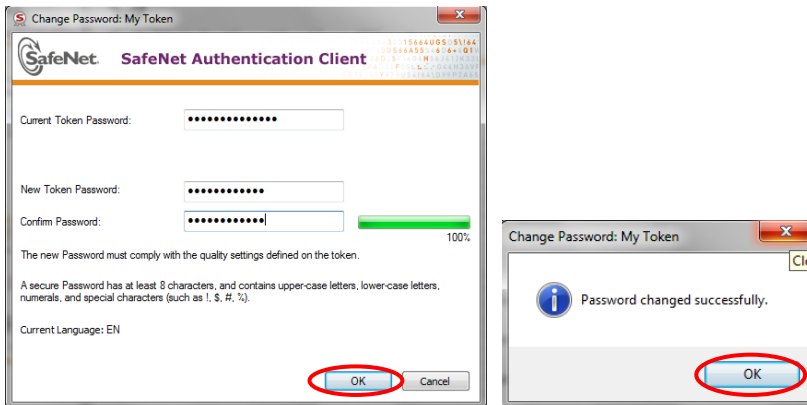


3. Change iKey Password (Optional)

1. Insert the iKey into your personal computer
2. From the **Start** menu, select **Programs > SafeNet > SafeNet Authentication Client > SafeNet Authentication Client Tools**. Click the **Change Token Password**.



3. The Change Password window appears.



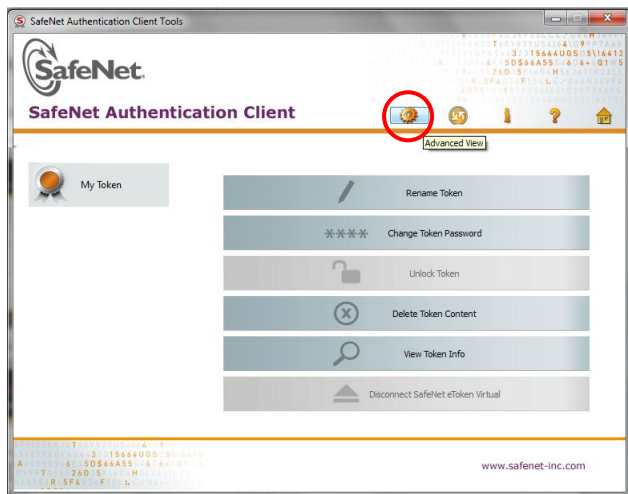
- a) In the **Current Token Password** field, enter your current Password. For first time login, use the NEW PIN Mailer password.
- b) In the **New Token Password** field, enter your new Password.
- c) In the **Confirm Password** field, enter your new Password again for confirmation.
- d) Click **OK** to update your password and click **OK** to complete.

Note:

- **iKey will be locked, if you entered incorrect password for 10 times .**
- **The password at least 8 characters and contains upper-case letters, lower-case letters, numerals and special characters.**

4. View the Digital Certificate

1. From the **Start** menu, select **Programs > SafeNet > SafeNet Authentication Client > SafeNet Authentication Client Tools**. Click the **Advanced View** icon .



2. Select the Token slot to view the digital certificate

